

2015 FREIGHTLINER BUSINESS CLASS M2 106 For Sale In Marengo, Illinois



For Sale Price: \$108,000

Contact Information

HODGES WESTSIDE TRUCK CENTER

📍 [Marengo, Illinois 60152](#)

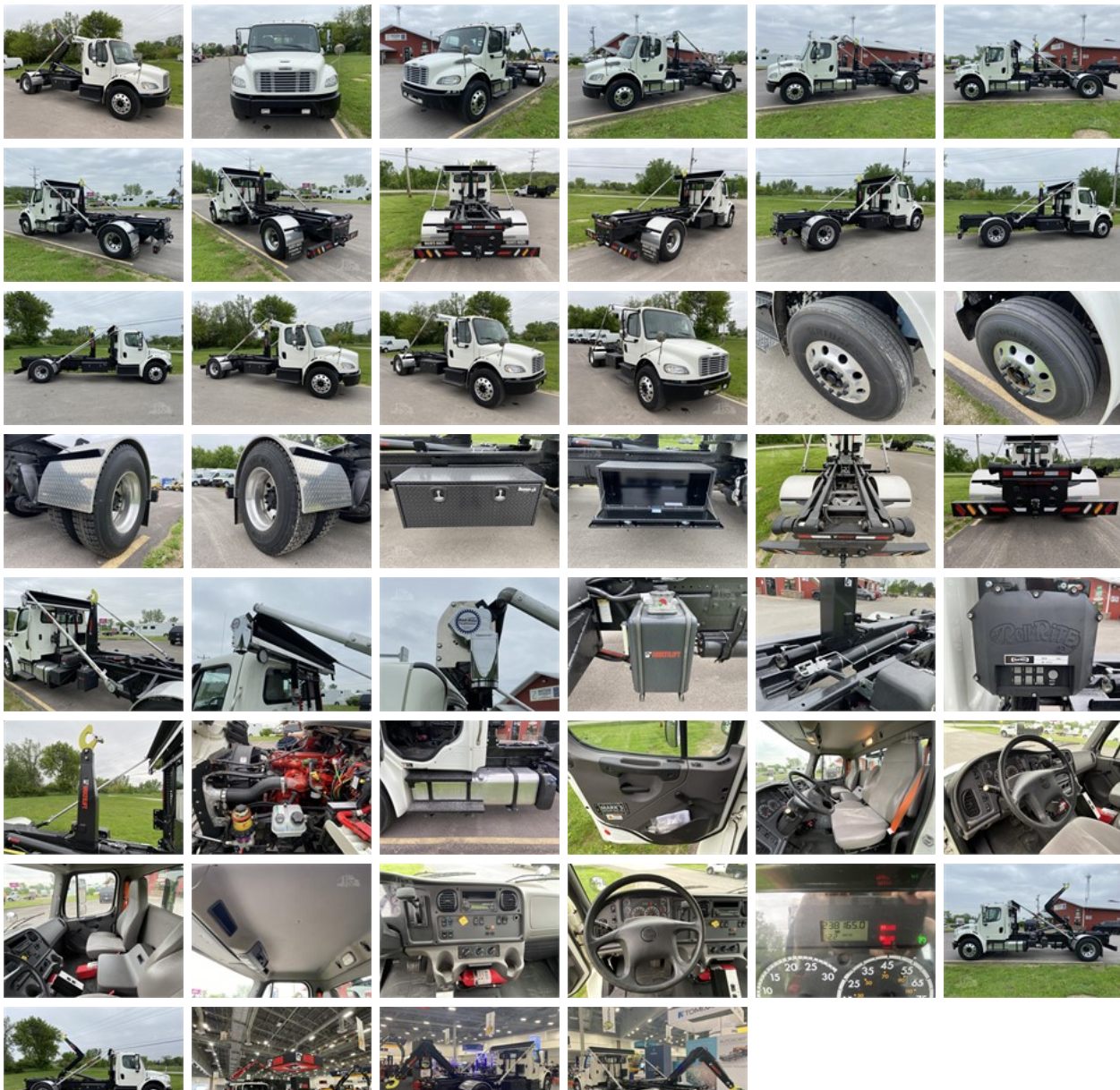
📞 Phone: [\(815\) 687-7030](tel:(815)687-7030)

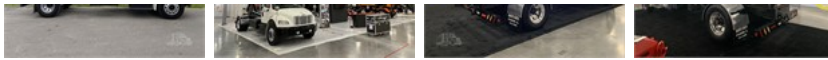
📧 Messenger: [Message](#)

📱 WhatsApp: [Message](#)

📺 [Video Chat With This Dealer](#)

👤 Contact: Dave Neurock





Description

Mileage: 238,165 mi
Engine Type: Cummins ISB 6.7L
Horsepower: 250hp
Transmission: Allison 2500 RDS Automatic
Ratio: 5.56
Brakes: Air
Gross Vehicle Weight: 33,000lbs
Suspension: Air Ride
Wheelbase: 204in
Tire Size: 11R22.5
Fuel Capacity: 80 gal

Options:

Air Ride Cab
Block Heater
Cruise
Power/Heated Mirrors
Tilt Steering Wheel

Hooklift Specs:

MULTILIFT XR10S-4150
22,000 LBS LIFT CAPACITY
14'-16' LENGTH BODY CAPACITY
54" AND 62" HOOK HEIGHT

CUSTOM FENDERS

1/8" DIAMOND PLATE ALUMINUM
5/8" SQUARE STOCK OUTER SUPPORTS
STAINLESS STEEL ANGLE WITH HIDDEN MOUNTING BOLTS

BRACKETS PAINTED WITH GLASS SHEILD EPOXY PRIMER AND GLASS GUARD 2800
POLYURETHANE TWO PART

CHELSEA HOTSHIFT PTO

BUYERS PRODUCT ALUMINUM TOOLBOC 48"X18"X18" MATTE BLACK FINISH

REAR HITCH AND LIGHT BAR BUMPER

3/4" PLATE WITH 3/8" SIDE GUSSETS
2" X 2" RECIEVER TUBE
1 DRAW-TITE IV BRAKE CONTROLLER
1 6-WAY AND 1 7 RV STYLE TRAILER PLUGS
2 5/8 B40 D-RINGS
4" X 8" X 3/16" REC TUBING FOR BUMPER
ALL LIGHT ARE LED

STROBE PACKAGE

2 4.5" THIN VERTICAL AMBER/CLEAR STROBES
2 6" OVALS MOUNTED IN REAR LIGHT BAR

TARP SYSTEM

ROLL RITE
DC200. TM STATIONARY TOWER. 5 SPRING 84" EXT PIVOT. WIDE BOW SET
MESH TARP

Specifications

Quantity	1	Stock Number	GN6291
Year	2015	Manufacturer	FREIGHTLINER
Model	BUSINESS CLASS M2 106	Condition	Used
Horsepower	250 HP	Transmission	Automatic
Engine Manufacturer	Cummins	Suspension	Air Ride
Ratio	5,56	Tires	11R22.5
Wheels	Aluminum	Wheelbase	204 in
Number of Rear Axles	Single	Engine Model	ISB
Length	16 ft	Mileage	238,165 mi
Fuel Type	Diesel	Transmission Type	Allison RDS
Gross Vehicle Weight	33,000 lb	Cruise Control	Yes
Transmission Manufacturer	ALLISON	Drive Side	Left Hand Drive
Tilt/Telescope	Yes	Power Steering	Yes
Drive	4x2	Engine Displacement	6.7 l
VIN	3ALACXDT5FDGN6291		